



UTEP
RESEARCH & INNOVATION



Research Compliance & Regulatory Assurances Newsletter Sixth Edition

Dear Colleagues,

Happy New Year and welcome to the sixth edition of our quarterly newsletter. I invite you to read through it and join us in expanding our knowledge of research compliance and security, as well as celebrating the accomplishments of fellow researchers. We hope that this year continues the trend of fostering collaboration and bringing us ever closer together as a research community.

In our sixth issue, we cover topics ranging from an exciting new educational and networking opportunity for researchers and staff, to news about a new protocol submission platform for IRB, and a recent publication by several UTEP faculty involving the relationship between diabetes and Alzheimer's disease in the elderly.

Thank you for all that you do to advance research at UTEP. We welcome any recommendations on research highlights, tips, and learning opportunities to promote in future issues.

Go Miners!

Elaine Joseph, Ph.D. C.P.I.A.

Associate Vice President, Research Compliance & Regulatory Assurances

Top Story

Introducing the Animal Compliance Liaison Program!

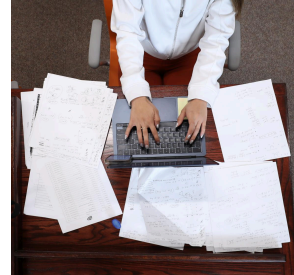
The University of Texas at El Paso Animal Compliance Liaison (ACL) Program is a unique educational and networking opportunity designed to boost compliance knowledge across all aspects of the UTEP animal care and use program and will launch in late March 2026. This exciting program is aimed at research assistants, lab managers, graduate student, post-doctoral fellows, and faculty working in animal research. The six-week program consists of one and a half to two hour Microsoft Teams meetings given by various leaders supporting the animal care and use program. Upon completion of the program, certified ACLs will be deemed subject matter experts and can use their knowledge to facilitate successful and compliant use of animals and protocol submissions across their departments. They will also become members of the ACL Policy and Procedure Sub-Committee that will assist the animal care and use program in reviewing and revising policies and procedures..

If you are interested in joining this exciting first cohort, please feel free to contact Dr. Elaine Joseph directly at enjoseph@utep.edu or 915-747-0994.

Did You Know?

It is Time to Complete Your Annual Disclosure and Certification Requirement?

Certain individuals, key personnel on active grants, IRB, IACUC, and IBC protocols, must complete the disclosure requirement for outside activity that took place in the calendar year 2025 (January 1, 2025 - December 31, 2025). Please log into the Outside Activity Portal and complete one of three options below by February 27, 2026:



1. Report No Activity: If you did not participate in any outside activity during the 2025 calendar year, you must indicate that by completing the No Activity form. Click [here](#) for instructions. Please insure you select the "prior year (2025)" on the **form**.
2. Generate Disclosure: If you requested approval during the 2025 calendar year, generate a disclosure form from your final approved request. Click [here](#) for instructions.
3. Submit a Disclosure: If you participated in an outside activity but did not submit a request for approval during the 2025 calendar year, click **Activity Form** to begin a disclosure. Click [here](#) for instructions.

Email us for more information or questions.

[Email us Here](#)

Compliance Updates

A Message From the IACUC Office

The IACUC Office would like to thank research staff and faculty for their continued commitment to maintaining the highest standards of animal welfare and adherence to IACUC policies. The Research Compliance Team in the IACUC Office have introduced a new Potential Non-Compliance Reporting Form. This form is now available on our **website** and displayed on posters throughout the animal facilities. Key features include:



1. Enhanced reporting options with detailed descriptions
2. QR code access for convenience
3. Anonymous submission capability
4. Secure recording of all response for internal tracking

In addition, we have made several updates to our website, including revised policies and updated meeting schedules. As a reminder, the IACUC Office also offers regular office hours every Thursday from 3:00-4:00pm via Microsoft Teams. Investigators and their staff are encouraged to join and ask questions related to submitting protocols or amendments, animal welfare, or just to say "Hi".

For more information, contact the IACUC Office.

[Email us Here](#)

IRB Prepares to Migrate to Key Solutions eProtocol Software

The Research Compliance Office began using Key Solutions eProtocol software for IACUC (animal) protocols in the fall of 2024 and expanded to IBC (biosafety) protocols in May 2025. The Key Solutions eProtocol software system allows investigators to see all of your protocols and amendments in one platform, easily clone or copy protocols, and view where your protocol or amendment is in the review process at any given time. Some time in March 2026, the IRB will begin a transition from IRBNet to the eProtocol platform by migrating all approved protocols to eProtocol. This migration will allow currently approved protocols to keep their old protocol numbers and have a baseline of data input



into the new, fully online protocol form. This form was created with input from not only the IRB Office, but multiple UTEP human subjects research faculty as well.

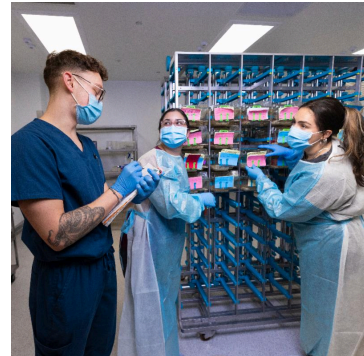
More information on the transition will be coming in the next weeks and months! These communications will include links to training videos to assist you in navigating the new system. In the meantime, anyone who wishes to preview what the new system will look like can contact Dr. Elaine Joseph for access to a test system.

[Email us Here](#)

LARC News

Singly-Housed Mice Can Alter Research Data

All IACUCs, not just UTEP's, require scientific or veterinary justification for singly-housed animals, including rodents. Why? Solitary housing is recognized as a stressful condition. This is due to the physiological and psychological changes that can occur in single-housed rodents. Solitary rodents can show signs of chronic stress: fear response and destructive behaviors, reduced cognitive function, withdrawal, and higher corticosterone levels. Solitary animals may experience metabolic disruptions and altered immune responses which can affect experimental outcomes. Some research has also revealed that single-housing can have physiological effects, such as decreased gut microbiota that can contribute to the pathogenesis of disease. Daily positive human interaction can provide social stimulation to reduce solitary stress in rodents. However, human interaction does not compare to social housing.



If you need to singly-house your animals, please ensure that you have veterinary or scientific justification. Scientific justification must be written and approved in your IACUC protocol. LARC also has ways to flag/mark your cages to help the IACUC and LARC identify the reason animals have been singly-housed. Together we can improve animal welfare and science! If you have any questions, please contact LARC.

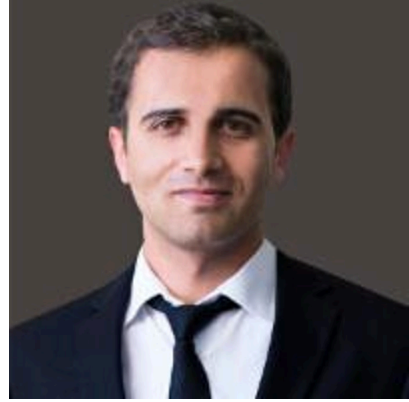
[Email us Here](#)

In the News

Increased Co-Morbidity for Older Adults with Dual Diagnoses of Diabetes and Alzheimer's Disease

A diagnosis of either diabetes or Alzheimer's disease means increased health problems for the elderly, however the presence of both can certainly increase these challenges. In work conducted as part of the Health Policy Lab in the College of Health Sciences, Dr. Rojas-Alvarez, Dr. Umucu, and others from the University of Texas at El Paso published a study in September 2025 examining differences in health and health outcomes between older adults with dual diagnoses and those with only one diagnosis. The motivation for the study was to examine the compound complexities of dual diagnoses in a way that has not been previously explored. They argue that the interaction between diabetes and Alzheimer's disease produces effects that are greater than the sum of each condition individually. In a paper published in the *Journal of Alzheimer's Disease* and funded by several grants from the National Institutes of Health and Health and Human Services, this study analyzed nearly 200,000 visit records from over 50,000 participants. The results found significant associations between a dual diagnosis and worsened outcomes, suggesting increased co-morbidity. These synergistic effects underscore the need for targeted policy and clinical responses to address a growing population, particularly considering the current aging trends in the United States.

To read the complete article click below.



[Read the Article Here](#)



Research & Innovation
The University of Texas at El Paso
500 W. University Ave.
El Paso, TX 79968

research.utep.edu

The University of Texas El Paso | 500 W. University Ave. | El Paso, TX 79968 US

[Unsubscribe](#) | [Update Profile](#) | [Constant Contact Data Notice](#)



Try email marketing for free today!